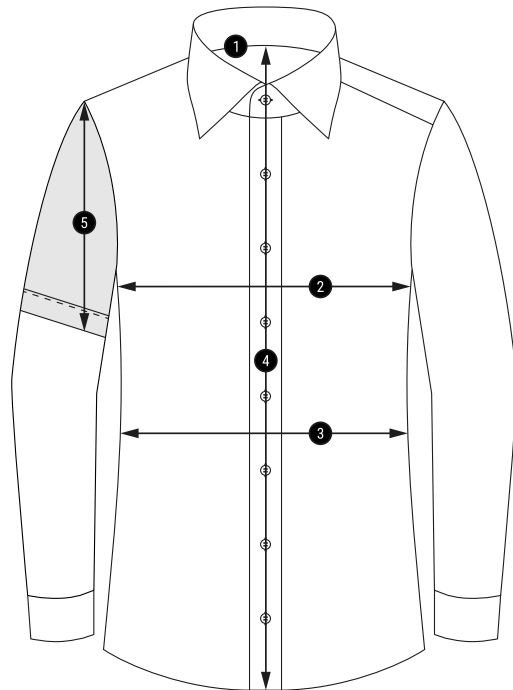


REDMOND®



Businessshemden

Standard-Maßtabelle standard measurement chart



| 1 | Größen | | XS | S | M | L | XL | XXL | 3XL | 4XL | 5XL | 6XL | |
|---|----------------------|-----------------------|------------|------------|------------|------------|------------|--------|--------|---------|-----|-----|--|
| | Kragenweite | cm | 36 | 37/38 | 39/40 | 41/42 | 43/44 | 45/46 | 47/48 | 49/50 | 52 | 54 | |
| | collar sizes | inch | 14 | 14½/15 | 15½/15¾ | 16/16½ | 17/17½ | 17¾/18 | 18½/19 | 19¼/19½ | 20½ | 21¼ | |
| 2 | Oberweite | regular/comfort fit | 102 | 110 | 118 | 126 | 134 | 144 | 154 | 164 | 170 | 180 | |
| | | chest measurement | | | | | | | | | | | |
| | | modern fit | 100 | 108 | 116 | 124 | 132 | 138 | 146 | | | | |
| | slim fit | 98 | 104 | 110 | 116 | 124 | 132 | | | | | | |
| 3 | Tailleweite | regular/comfort fit | 98 | 106 | 114 | 122 | 134 | 144 | 154 | 164 | 172 | 182 | |
| | | waist measurement | | | | | | | | | | | |
| | | modern fit | 94 | 100 | 106 | 112 | 122 | 132 | 142 | | | | |
| | slim fit | 86 | 92 | 98 | 104 | 112 | 120 | | | | | | |
| 4 | Rumpflänge bei ÄL 66 | regular/comfort fit | 81 | 82 | 82 | 83 | 85 | 88 | 90 | 90 | 93 | 93 | |
| | | body length for SL 66 | | | | | | | | | | | |
| | | modern fit | 77 | 78 | 79 | 81 | 84 | 86 | 88 | | | | |
| | slim fit | 73 | 75 | 78 | 78 | 81 | 81 | | | | | | |
| | Rumpflänge bei ÄL 70 | modern fit | 81 | 82 | 83 | 85 | 88 | 90 | 92 | | | | |
| 5 | Ärmellänge 1/2 | regular/comfort fit | 28 | 28 | 28 | 28 | 28 | 28 | 30 | 30 | 30 | 30 | |
| | | short sleeve | | | | | | | | | | | |
| | | modern fit | 27,5 | 27,5 | 27,5 | 27,5 | 27,5 | 27,5 | 27,5 | | | | |
| | slim fit | 24 | 24 | 24 | 24 | 24 | 24 | | | | | | |